



SUN-AGE

PV MOUNTING SYSTEMS

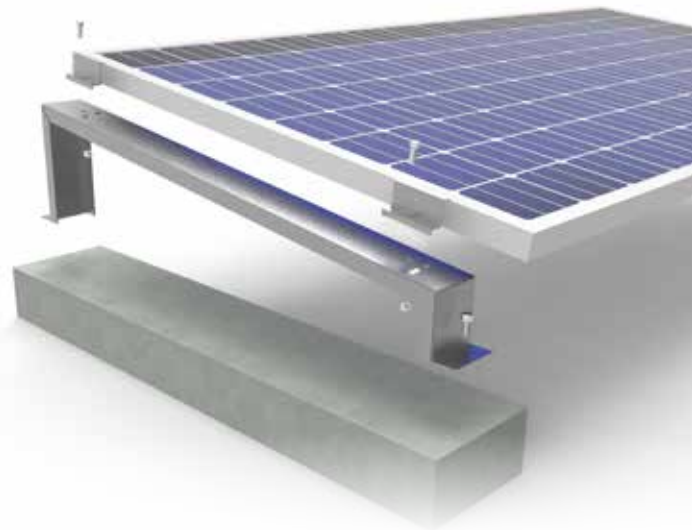
BROCHURE

20

BROCHURE

22

RESPECTING YOUR WORLD



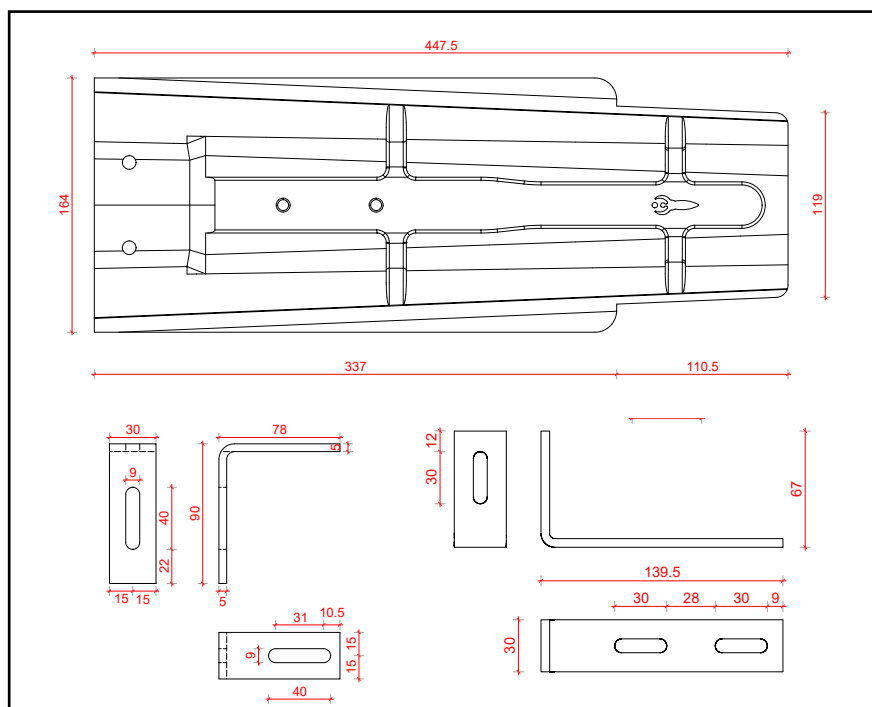
K100D00

**KIT COPPO STAFFA
PER TETTI CON COPPI
PERMETTE DI NON FORARE**

BENT TILE BRACKET - NO MORE HOLES



DIMENSIONI DIMENSIONS



INFORMAZIONI TECNICHE TECHNICAL INFORMATION

Staffa Acciaio INOX con regolazione da 6 a 12 cm
Stainless Steel Bracket with regulation from 6 to 12 cm

Piastra Zinco magnesio 1,2mm
Zinc Magnesium Bracket 1,2mm

VITI M8 acciaio INOX
Stainless Steel M8 Bolts

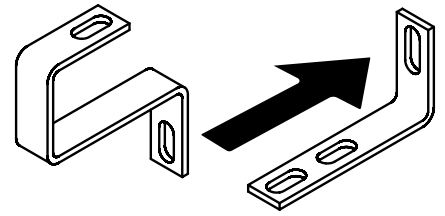
GRUPPO GROUP

**STAFFE
BRACKETS**

**TETTI A COPPO
BENT-TILE ROOFS**

K102D01

**KIT STAFFA ALTA 5mm
REGOLABILE
APPLICAZIONE SU TETTI
A COPPO**



**PAN TILE BRACKET "R" ADJUSTABLE
STAINLESS STEEL 5mm**

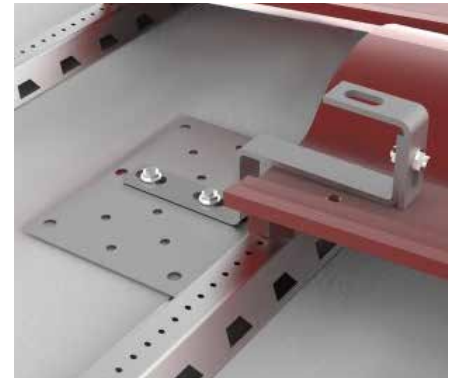
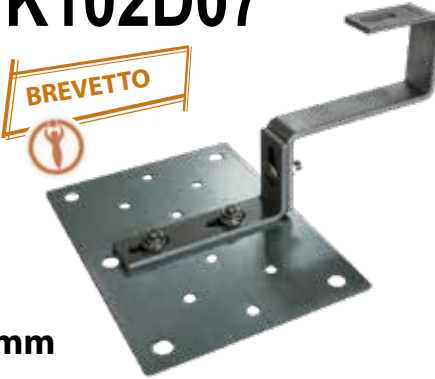


K102D07

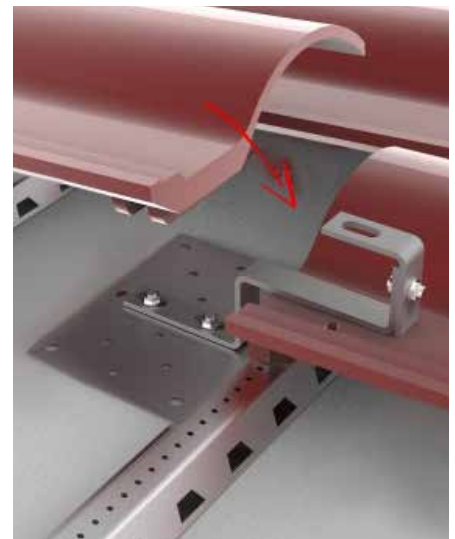
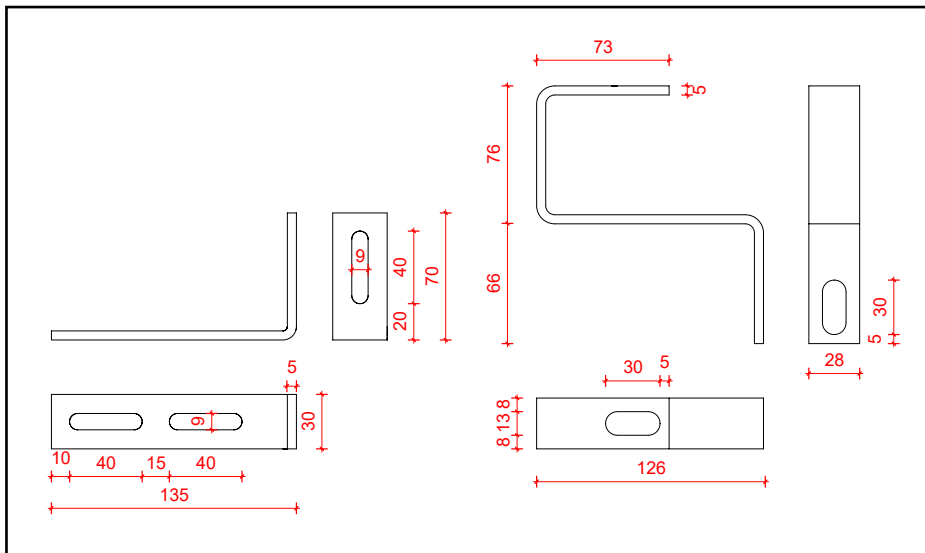


**KIT STAFFA ALTA REGOLABILE
ACCIAIO INOX 5mm
CON PIASTRA IN ZINCATO 1,5mm**

**5mm ADJUSTABLE PAN TILE BRACKET "R" STAINLESS STEEL
FOR PITCHED ROOFS
+ GALVANISED PLATE 1,5mm**



DIMENSIONI DIMENSIONS



INFORMAZIONI TECNICHE TECHNICAL INFORMATION

Acciaio INOX 5mm - Piastra Zincato 1,5mm
Stainless Steel 5mm - Galvanized Plate 1,5mm

Staffa con regolazione da 6 a 9,5 cm
Piastra D102Z25 220mm x 160mm
Bracket with regulation from 6 to 9,5 cm
D102Z25 Plate 220mm x 160mm

GRUPPO GROUP

**STAFFE
BRACKETS**

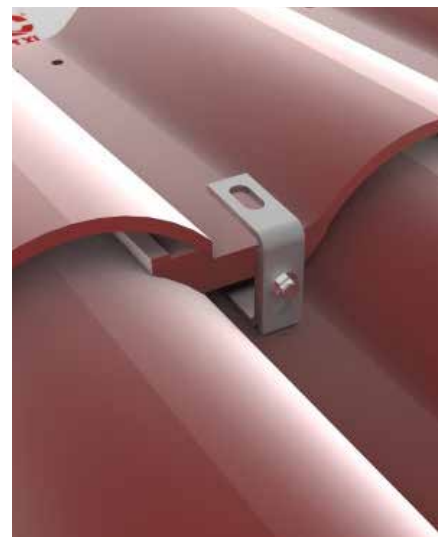
**TETTI A COPPO
BENT-TILE ROOFS**

VITI M8 acciaio INOX
Stainless Steel M8 Bolts

K103D00

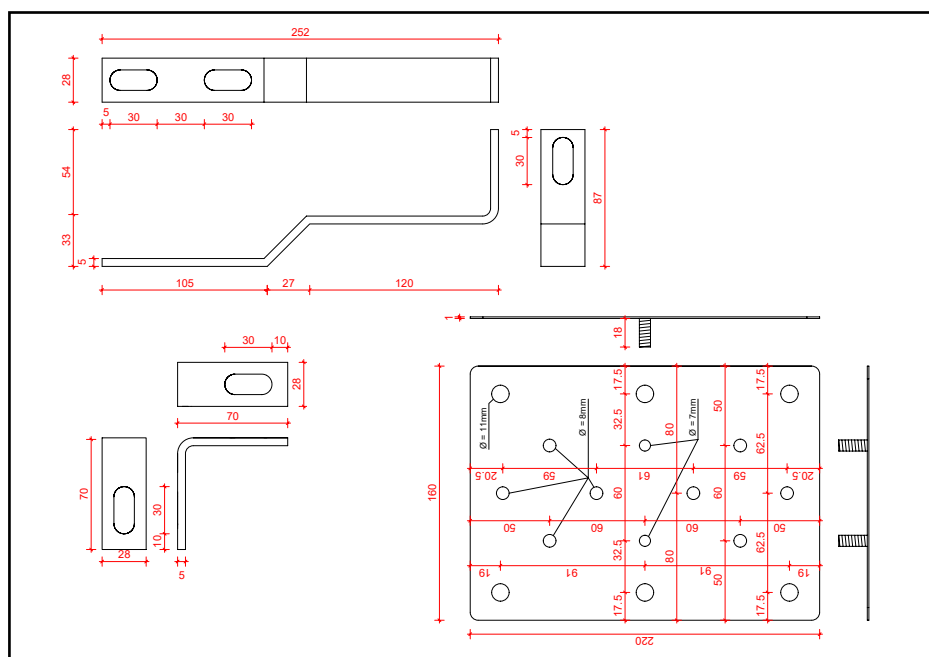
KIT STAFFA BASSA REGOLABILE
5mm ACCIAIO INOX
CON PIASTRA ZINCATA 1,5mm

PLAIN TILES "S" TYPE ADJUSTABLE
BRACKET 5mm WITH GALVANISED
PLATE 1,5mm



DIMENSIONI

DIMENSIONS



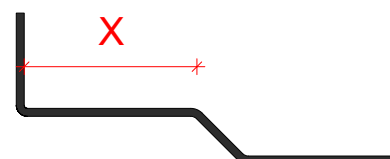
INFORMAZIONI TECNICHE

TECHNICAL INFORMATION

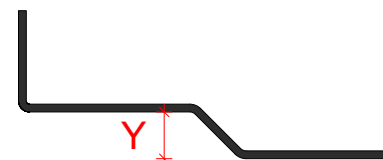
Staffa Acciaio INOX 5mm
Stainless Steel Bracket 5mm

Piastra Zinco Magnesio D102Z25 220mm x 160mm
D102Z25 Zinc Magnesium Plate 220mm x 160mm

VITI M8 acciaio INOX
Stainless Steel M8 Bolts



- mm 120 - codice A
- mm 140 - codice B
- mm 160 - codice C
- mm 180 - codice D
- mm 200 - codice E



- mm 20 - codice 1
- mm 25 - codice 2
- mm 30 - codice 3
- mm 40 - codice 4
- mm 45 - codice 5
- mm 50 - codice 6

GRUPPO

GROUP

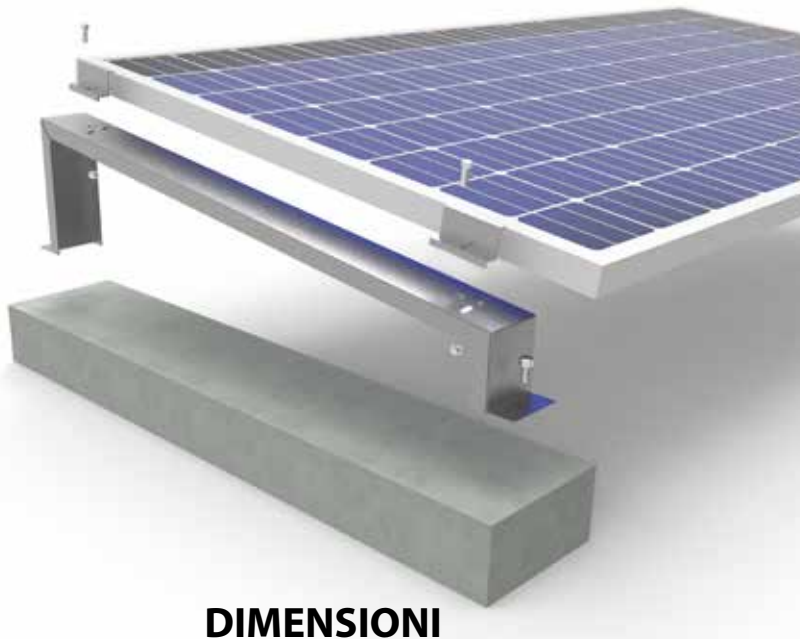
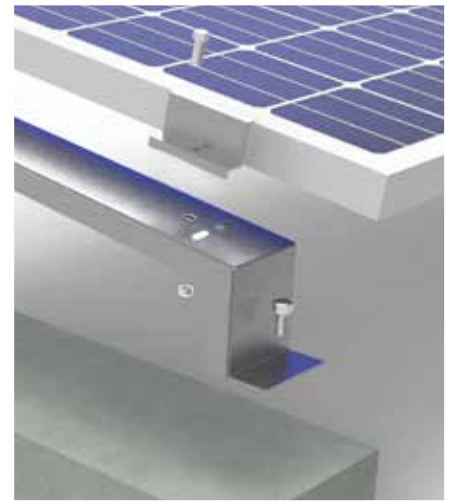
STAFFE
BRACKETS

TETTI A TEGOLA
TILE ROOFS

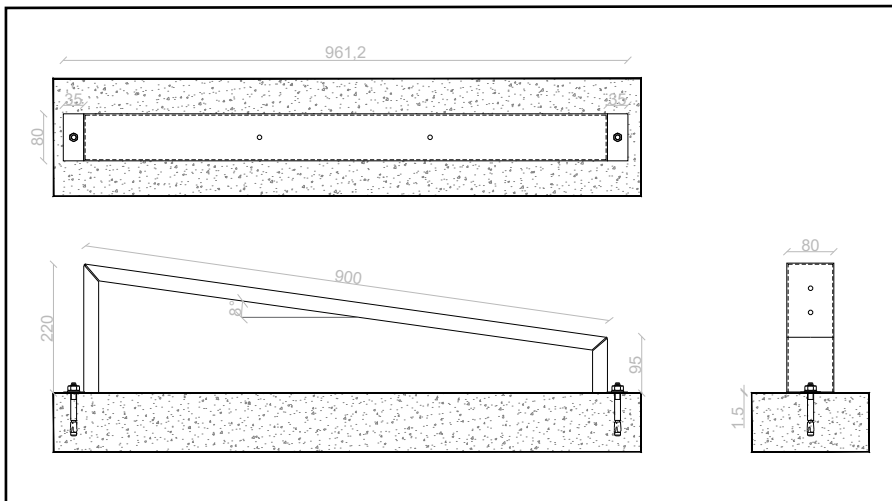
K200D10 VELOCE

**KIT TRIANGOLO IN ACCIAIO INOX
INCLINAZIONE 15° MODULI ORIZZONTALI INCLUSO
VITERIA E MORSETTI INOX
- PER ZAVORRA O FISSAGGIO MECCANICO -**

*FLAT ROOF MOUNTING SYSTEM - STAINLESS STEEL
15° TILT - HORIZONTAL MODULE - INCLUDING JAWS, BOLTS,
NUTS AND SCREWS*



DIMENSIONI DIMENSIONS



INFORMAZIONI TECNICHE TECHNICAL INFORMATION

KIT PER TETTI PIANI CON ZAVORRA
Acciaio INOX AISI 430
Spessore 1,5 mm

*FLAT ROOF MOUNTING SYSTEM WITH REAR
Stainless Steel AISI 430
1,5 mm thickness*



**ZAVORRA A RICHIESTA
BALLAST ON REQUEST**

GRUPPO GROUP

**TETTI PIANI
FLAT ROOFS**

K200D65S

**TETTO PIANO A VELA – SU RICHIESTA 2-5 FILE DI MODULI. INCLINAZIONE 10° ÷ 30°
MODULI ORIZZONTALI O VERTICALI**

SAIL MOUNTING SYSTEM FOR FLAT ROOFS

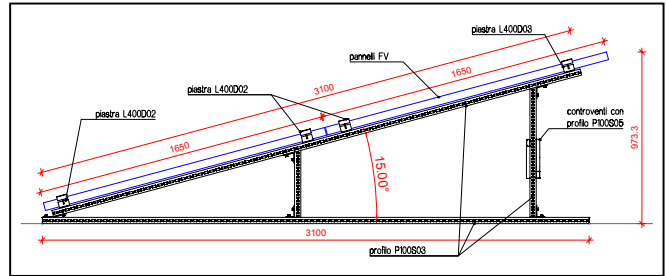


**DISPONIBILE PER
MODULI
ORIZZONTALI E
VERTICALI**

*AVAILABLE FOR
HORIZONTALLY
AND VERTICALLY
PLACED
PANELS*



**DIMENSIONI
DIMENSIONS**



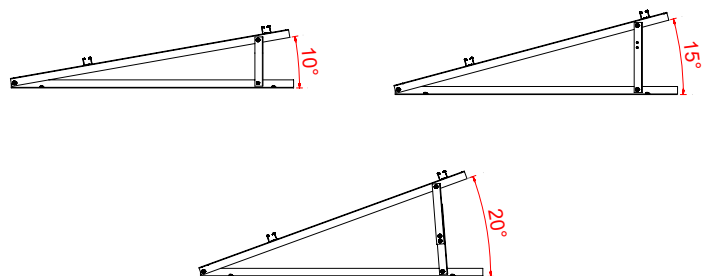
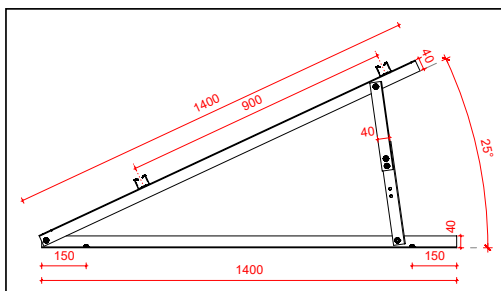
K302D12

**KIT TRIANGOLO PER TETTO PIANO UNIVERSALE TUTTE
LE INCLINAZIONI (10° ÷ 30°) E VERSI DEI MODULI CON
PROFILI**

*ALL-AROUND TRIANGLE WITH JAWS INCLUDED, 10° ÷ 30°
ADJUSTABLE TILT FOR EITHER HORIZONTAL
OR VERTICAL MODULES WITH PROFILES*



**DIMENSIONI
DIMENSIONS**



**INFORMAZIONI TECNICHE K200D65S
K200D65S TECHNICAL INFORMATION**

*STRUTTURA A VELA CON MORSETTO QUADRUPLO
PER 3 PANNELLI ACCIAIO INOX E ZINCO
MAGNESIO - INCLINAZIONE 0°-30°*

*SAIL MOUNTING SYSTEM FOR FLAT ROOFS BASED ON TRIAN-
GLES AND PATENTED SYSTEM TO BLOCK PANELS
ZINC MAGNESIUM BARS AND STAINLESS STEEL ACCESSORIES*

**INFORMAZIONI TECNICHE K302D12
K302D12 TECHNICAL INFORMATION**

*KIT MODULARE TETTO PIANO CON TRIANGOLI E PROFILI
IN ALLUMINIO - STRUTTURA IN
ALLUMINIO - PER MODULI ORIZZONTALI E VERTICALI*

*FLAT ROOF MOUNTING SYSTEM COMPOSED OF ALUMINUM
TRIANGLES AND PROFILES - ALUMINUM STRUCTURE - FOR
HORIZONTAL AND VERTICAL MODULES*

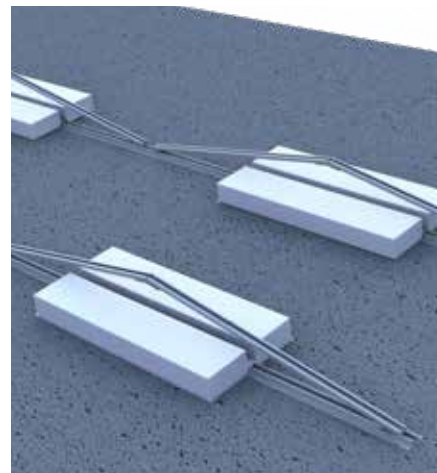
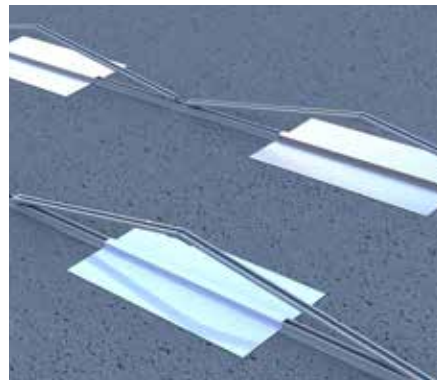
**GRUPPO
GROUP**

**TETTI PIANI
FLAT ROOFS**

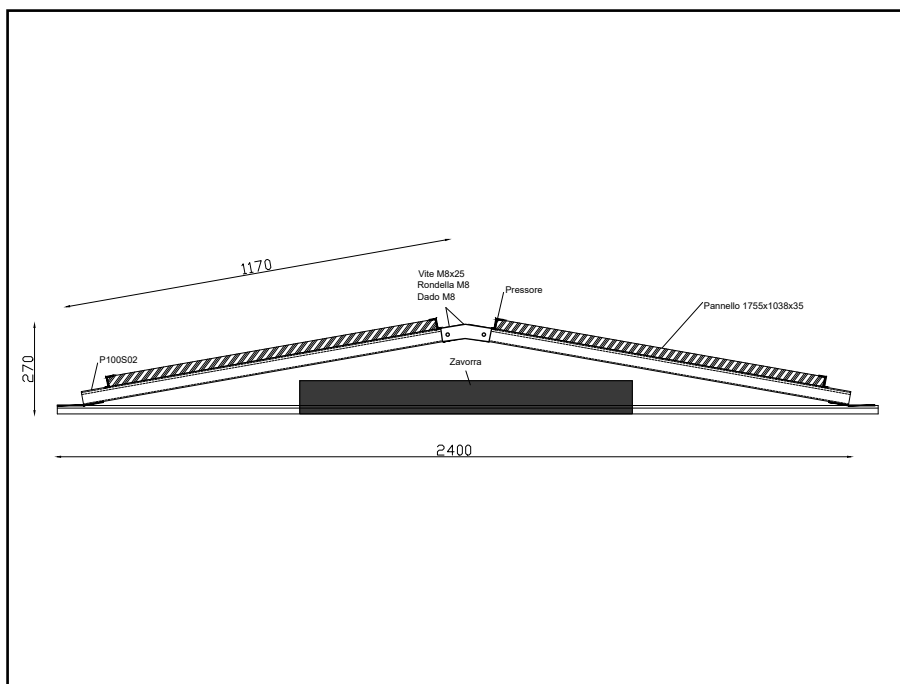
K307D00

TRIANGOLO EST/OVEST
PER TETTO PIANO - INCLINAZIONE 5° ÷ 20°

FLAT ROOF MOUNTING
EAST/WEST TRIANGLE - 5° ÷ 20° TILT



DIMENSIONI DIMENSIONS



INFORMAZIONI TECNICHE TECHNICAL INFORMATION

STRUTTURA MODULARE TETTO PIANO CON TRIANGOLO
IN ZINCO MAGNESIO, GIUNZIONE IN ACCIAIO INOX
INCLINAZIONE DA 5° A 20° - MODULI ORIZZONTALI

FLAT ROOF MOUNTING SYSTEM BASED ON ZINC MAGNESIUM
STRUCTURE AND STAINLESS STEEL CHANNEL COUPLERS
TILT FROM 5° TO 20°
HORIZONTAL MODULES

DISPONIBILE PER
MODULI
ORIZZONTALI

AVAILABLE FOR
HORIZONTALLY
PLACED
PANELS

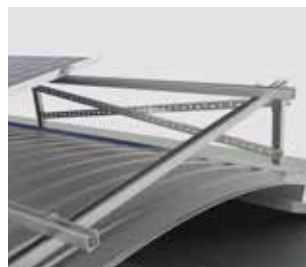
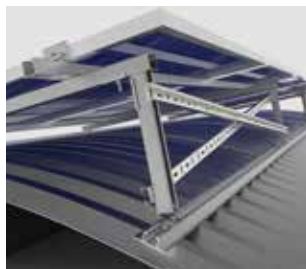
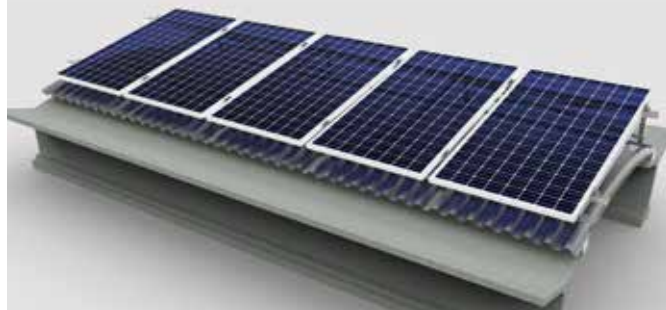
GRUPPO
GROUP

TETTI PIANI
FLAT ROOFS

K200D97

**TETTO A CUPOLINO
NEL VERSO CUPOLINO,
STRUTTURA APPOGGIATA SULLA GRECA**

*DOME ROOFS WITH MODULES
IN DIRECTION OF THE CORRUGATED SHEET
STRUCTURE MOUNTED ON THE CORRUGATED SHEET*



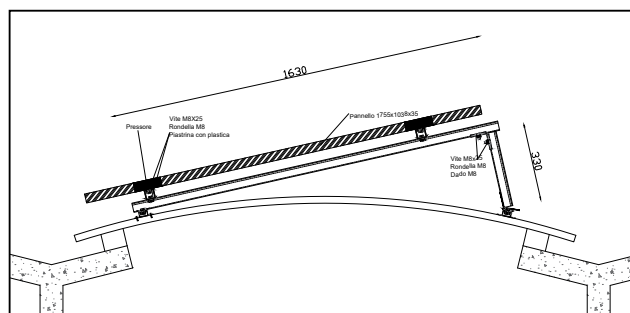
**DISPONIBILE IN
ALLUMINIO**

*ALUMINUM
STRUCTURE
AVAILABLE*

K200A97



DIMENSIONI DIMENSIONS



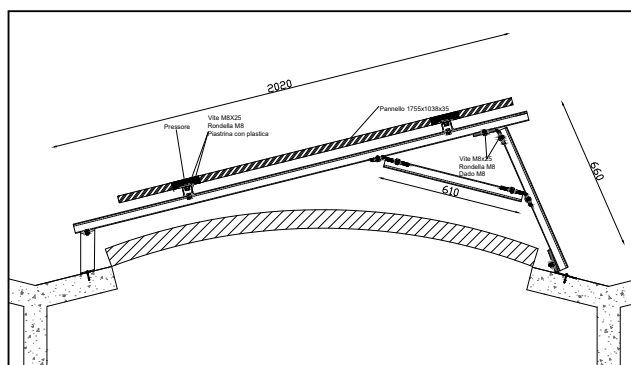
K200D99

**TETTO A CUPOLINO
NEL VERSO CUPOLINO**

*DOME ROOFS WITH MODULES
IN DIRECTION OF THE CORRUGATED SHEET*



DIMENSIONI DIMENSIONS



INFORMAZIONI TECNICHE K200D97 K200D97 TECHNICAL INFORMATION

KIT COMPLETO NEL SENSO DEL CUPOLINO - STRUTTURA APPOGGIATA SU PROFILO LONGITUDINALE AVVITATO SULLA GRECA - INOX E ZINCO MAGNESIO VITERIA INCLUSA

MOUNTING SYSTEM FOR ROUND ROOFS - PANELS IN DIRECTION OF THE CORRUGATION STRUCTURE LAID ON BARS TIGHTENED TO THE CORRUGATED SHEET - ZINC MAGNESIUM - STAINLESS STEEL

INFORMAZIONI TECNICHE K200D99 K200D99 TECHNICAL INFORMATION

KIT COMPLETO NEL SENSO DEL CUPOLINO - SISTEMA PER TETTI A CUPOLINO CON INTERASSE > 1.60 m CON FISSAGGIO MECCANICO ALLA TRAVE O CON ZAVORRA O ALTRI SISTEMI PER NON FORARE LA TRAVE - INOX, ZINCO MAGNESIO O ALLUMINIO (SU RICHIESTA) - VITERIA INCLUSA - INCLINAZIONE 0° ÷ 30°

MOUNTING SYSTEM FOR ROUND ROOFS PANELS IN DIRECTION OF THE CORRUGATED SHEET - SYSTEM FOR CORRUGATED SHEET WITH > 1.60m WHEELBASE, WITH MECHANICAL FIXING MODE, WITH BALLAST OR OTHER NO HOLES FIXING METHODS - ZINC MAGNESIUM, STAINLESS STEEL OR ALUMINUM (ON REQUEST) - 0° ÷ 30° TILT

GRUPPO GROUP

**TETTI A
CUPOLINO
DOME ROOFS**

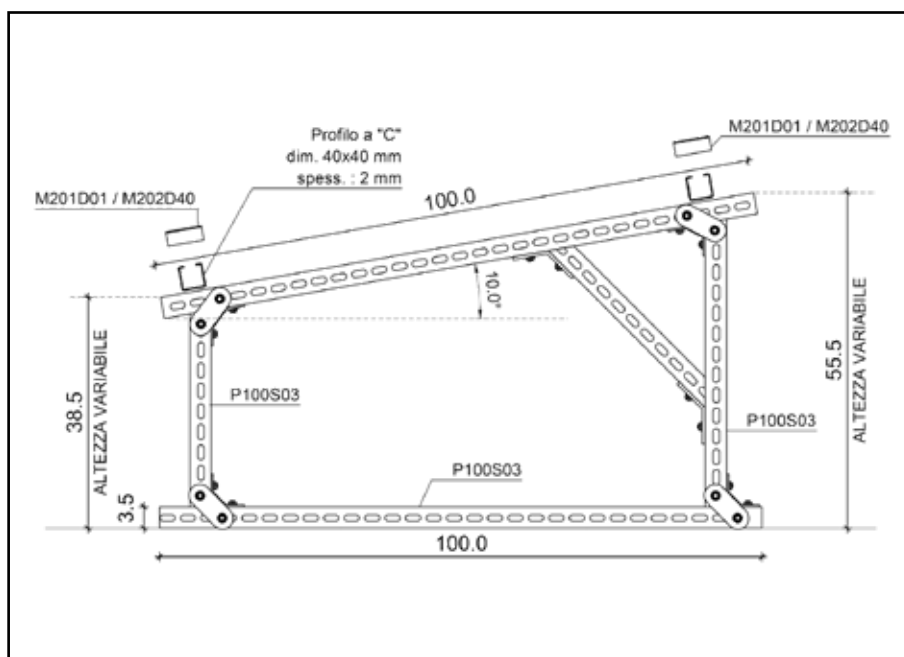
K301D01



**STRUTTURA PER TETTO
A CUPOLINO CON MODULI
TRASVERSALI AL VERSO DEL CUPOLINO**

*DOME ROOF WITH MODULES ORTOGONAL
TO CORRUGATED SHEET DIRECTION*

DIMENSIONI DIMENSIONS



INFORMAZIONI TECNICHE TECHNICAL INFORMATION

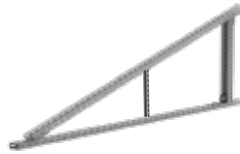
**KIT TRIANGOLO PER MODULI POSTI TRASVERSALMENTE
AL CUPOLINO IN ACCIAIO INOX E
ZINCO MAGNESIO**

*MOUNTING SYSTEM FOR ROUND ROOF - TRAPEZE AND BARS IN
HDG STEEL - PANELS IN PERPENDICULAR
DIRECTION TO CORRUGATION IN STAINLESS STEEL*



GRUPPO GROUP

**TETTI A
CUPOLINO
DOME ROOFS**

V800A02**V800A03****INFORMAZIONI TECNICHE**
TECHNICAL INFORMATIONS**V800A02-10**TRIANGOLO ALLUMINIO 40X40X3 LATI
CA 900X900 - INCLINAZIONE 10°ALUMINIUM TRIANGLE - ALUMINIUM BAR
40X40X3 - SIZE 900X900 - 10° TILT**V800A03-10**TRIANGOLO ALLUMINIO 40X40X3 LATI CA
1400X1400 - INCLINAZIONE 10°ALUMINIUM TRIANGLE - ALUMINIUM BAR
40X40X3 - SIZE 1400X1400 - 10° TILT**V800A02-15**TRIANGOLO ALLUMINIO 40X40X3 LATI
CA 900X900 - INCLINAZIONE 15°ALUMINIUM TRIANGLE - ALUMINIUM BAR
40X40X3 - SIZE 900X900 - 15° TILT**V800A03-15**TRIANGOLO ALLUMINIO 40X40X3 LATI CA
1400X1400 - INCLINAZIONE 15°ALUMINIUM TRIANGLE - ALUMINIUM BAR
40X40X3 - SIZE 1400X1400 - 15° TILT**V800A02-20**TRIANGOLO ALLUMINIO 40X40X3 LATI
CA 900X900 - INCLINAZIONE 20°ALUMINIUM TRIANGLE - ALUMINIUM BAR
40X40X3 - SIZE 900X900 - 20° TILT**V800A03-20**TRIANGOLO ALLUMINIO 40X40X3 LATI CA
1400X1400 - INCLINAZIONE 20°ALUMINIUM TRIANGLE - ALUMINIUM BAR
40X40X3 - SIZE 1400X1400 - 20° TILT**V800A02-25**TRIANGOLO ALLUMINIO 40X40X3 LATI
CA 900X900 - INCLINAZIONE 25°ALUMINIUM TRIANGLE - ALUMINIUM BAR
40X40X3 - SIZE 900X900 - 25° TILT**V800A03-25**TRIANGOLO ALLUMINIO 40X40X3 LATI CA
1400X1400 - INCLINAZIONE 25°ALUMINIUM TRIANGLE - ALUMINIUM BAR
40X40X3 - SIZE 1400X1400 - 25° TILT**V800A02-30**TRIANGOLO ALLUMINIO 40X40X3 LATI CA
900X900 - INCLINAZIONE 10° ± 30°ALUMINIUM TRIANGLE - ALUMINIUM BAR
40X40X3 - SIZE 900X900 - 30° TILT**V800A03-30**TRIANGOLO ALLUMINIO 40X40X3 LATI CA
1400X1400 - INCLINAZIONE 10° ± 30°ALUMINIUM TRIANGLE - ALUMINIUM BAR
40X40X3 - SIZE 1400X1400 - 30° TILT**V800A02-REG**TRIANGOLO ALLUMINIO 40X40X3 LATI CA
900X900 - INCLINAZIONE REGOLABILEALUMINIUM TRIANGLE - ALUMINIUM BAR
40X40X3 - SIZE 900X900 - ADJUSTABLE TILT**V800A03-REG**TRIANGOLO ALLUMINIO 40X40X3 LATI CA
1400X1400 - INCLINAZIONE REGOLABILEALUMINIUM TRIANGLE - ALUMINIUM BAR
40X40X3 - SIZE 1400X1400 - ADJUSTABLE TILT**DISPONIBILE IN
ALLUMINIO****AVAILABLE IN
ALUMINUM****V800A02-REG**
V800A03-REG**controvento incluso**
bracing profile included**V800D07**
1400**V800D07**
2100**V800D06****V800D07**
3100**INFORMAZIONI TECNICHE**
TECHNICAL INFORMATIONS**V800D07 - 1400** **V800D07 - 2100** **V800D07 - 3100**TRIANGOLO IN ZINCO
MAGNESIO 1400X1400
INCLINAZIONE 10° ± 30°ZINC MAGNESIUM TRIANGLE -
BAR 40X35X1.5 - SIZE 1400X1400
10° ± 30° TILTTRIANGOLO IN ZINCO
MAGNESIO 2100X2100
INCLINAZIONE 10° ± 30°ZINC MAGNESIUM TRIANGLE -
BAR 40X35X1.5 - SIZE 1400X1400
10° ± 30° TILTTRIANGOLO IN ZINCO
MAGNESIO 3100X3100
INCLINAZIONE 10° ± 30°ZINC MAGNESIUM TRIANGLE -
BAR 40X35X1.5 - SIZE 1400X1400
10° ± 30° TILT**V800D07-10 (10°) 1400** **V800D07-10 (10°) 2100** **V800D07-10 (10°) 3100****V800D07-15 (15°) 1400** **V800D07-15 (15°) 2100** **V800D07-15 (15°) 3100****V800D07-20 (20°) 1400** **V800D07-20 (20°) 2100** **V800D07-20 (20°) 3100****V800D07-25 (25°) 1400** **V800D07-25 (25°) 2100** **V800D07-25 (25°) 3100****V800D07-30 (30°) 1400** **V800D07-30 (30°) 2100** **V800D07-30 (30°) 3100****V800D06-10**TRIANGOLO IN ZINCO MAGNESIO
900X900 - INCLINAZIONE 10°ZINC MAGNESIUM TRIANGLE - BAR 40X35X1.5
- SIZE 900X900 - 10° TILT**V800D06-15**TRIANGOLO IN ZINCO MAGNESIO
900X900 - INCLINAZIONE 15°ZINC MAGNESIUM TRIANGLE - BAR 40X35X1.5
- SIZE 900X900 - 15° TILT**V800D06-20**TRIANGOLO IN ZINCO MAGNESIO
900X900 - INCLINAZIONE 20°ZINC MAGNESIUM TRIANGLE - BAR 40X35X1.5
- SIZE 900X900 - 20° TILT**V800D06-25**TRIANGOLO IN ZINCO MAGNESIO
900X900 - INCLINAZIONE 25°ZINC MAGNESIUM TRIANGLE - BAR 40X35X1.5
- SIZE 900X900 - 25° TILT**V800D06-30**TRIANGOLO IN ZINCO MAGNESIO
900X900 - INCLINAZIONE 30°ZINC MAGNESIUM TRIANGLE - BAR 40X35X1.5
- SIZE 900X900 - 30° TILT**DISPONIBILE IN
ZINCO
MAGNESIO****AVAILABLE IN
ZINC
MAGNESIUM****V800D08****GRUPPO**
GROUP**TRIANGOLI**
TRIANGLES

G200D01



G210D01

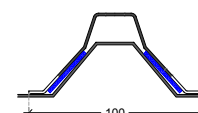
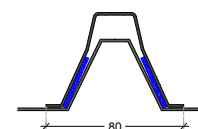
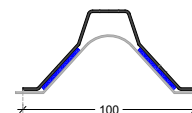
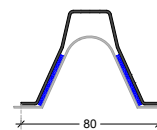


K700D00



MISURE APPLICAZIONE G200D01 G200D01 APPLICATION MEASURES

VARIE MISURE REALIZZABILI SU
COPERTURE GRECATE E ONDULINE



K400A07



K400A08



K411D01



K400Z07



K400Z08



K411D02



INFORMAZIONI TECNICHE TECHNICAL INFORMATIONS

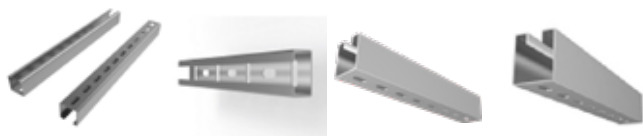
INFORMAZIONI TECNICHE TECHNICAL INFORMATIONS

G200D01	G210D01	K700D00
ANCORAGGIO SU LAMIERA GRECATA O ONDULINA - PIASTRA IN ACCIAIO INOX CON GUARNIZIONE EPDM, 120mm - DADO IN GABBIA E 4 FORI 5,2mm - Da abbinare a morsetto centrale M201D01 o laterale M202D.. e vite M8 TCEI. -PERSONALIZZABILE.	ANCORAGGIO SU LAMIERA MODELLO ISOCOCCO - PIASTRA IN ACCIAIO INOX CON GUARNIZIONE EPDM, 120mm - DADO IN GABBIA E 4 FORI 5,2mm - Da abbinare a morsetto centrale M201D01 o laterale M202D.. e vite M8 TCEI. -PERSONALIZZABILE.	KIT GRAFFA BLOCCAGGIO LAMIERA AGGRAFFATA IN ACCIAIO INOX + 2 BULLONI M8X30
CORRUGATED SHEET PLATE 1,5mm WITH EPDM SEALS. NUT M8, 5,2mm HOLES (4 holes) - STAINLESS STEEL COMBINED TO CENTRAL CLAMP M201D01 OR LATERAL CLAMP M202D01. CUSTOMABLE	ISOCOCCO CORRUGATED SHEET PLATE 1,5mm WITH EPDM SEALS ,NUT M8, 5,2mm HOLES (4 holes) - STAINLESS STEEL COMBINED TO CENTRAL CLAMP M201D01 OR LATERAL CLAMP M202D01. CUSTOMABLE	STAINLESS STEEL CLAMP FOR CORRUGATED SHEET + 2 M8X30 BOLTS

K400A07	K400A08
KIT PER GRECATO - MODULI ORIZZONTALI, CON PRESSORE CENTRALE IN ACCIAIO INOX COMPLETO VITERIA, PIASTRA 12cm IN ALLUMINIO + EPDM	KIT PER GRECATO - MODULI ORIZZONTALI, CON PRESSORE TERMINALE IN ACCIAIO INOX COMPLETO VITERIA, PIASTRA 12cm IN ALLUMINIO + EPDM
ALUMINUM PLATE WITH INTERMEDIATE JAW FOR CORRUGATED SHEET + EPDM FOR HORIZONTAL MODULES	ALUMINUM PLATE WITH "Z" TYPE JAW FOR CORRUGATED SHEET + EPDM FOR HORIZONTAL MODULES
K400Z07	K400Z08
KIT PER GRECATO - MODULI ORIZZONTALI, CON PRESSORE CENTRALE IN ACCIAIO INOX COMPLETO VITERIA, PIASTRA 12cm IN ZINCATO A CALDO + EPDM	KIT PER GRECATO - MODULI ORIZZONTALI, CON PRESSORE TERMINALE IN ACCIAIO INOX COMPLETO VITERIA, PIASTRA 12cm IN ZINCATO A CALDO + EPDM
HDG PLATE WITH INTERMEDIATE JAW FOR CORRUGATED SHEET WITH HORIZONTAL MODULES + EPDM	HDG PLATE WITH "Z" TYPE JAW FOR CORRUGATED SHEET FOR HORIZONTAL MODULES + EPDM
K411D01	K411D02
KIT PER GRECATO - MODULI ORIZZONTALI, CON PRESSORE CENTRALE IN ACCIAIO INOX COMPLETO VITERIA, PIASTRA 12cm IN ZINCATO A CALDO + EPDM	KIT PER GRECATO - MODULI ORIZZONTALI, CON PRESSORE TERMINALE IN ACCIAIO INOX COMPLETO VITERIA, PIASTRA 12cm IN ZINCATO A CALDO + EPDM
HDG PLATE WITH INTERMEDIATE JAW FOR CORRUGATED SHEET WITH HORIZONTAL MODULES + EPDM	HDG PLATE WITH "Z" TYPE JAW FOR CORRUGATED SHEET FOR HORIZONTAL MODULES + EPDM

GRUPPO GROUP

GRECATI CORRUGATED SHEET CLAMPS



P100S02

PROFILO ZINCATO A CALDO 41X41X2 mm A C - ASOLATO SOTTO
Barre da mt 3,10 (1,90kg/mt)

41X41X2 mm ZINC MAGNESIUM PROFILE With Holes Lenght 3,10 mt (1,90kg/mt)

P100S05

PROFILO A C IN ZINCO MAGNESIO 40X20 ASOLATO SOTTO
Barre da mt 3,00

C PROFILE IN ZINC MAGNESIUM 40X20 WITH HOLES Lenght 3,00 mt.

P100S09

PROFILO A C IN ZINCATO A CALDO 55X62X18 ASOLATO SOTTO
Barre da mt 3,00 e 6,00

C PROFILE HDG 55X62X18 WITH HOLES Lenght 3,00 mt or 6,00 mt.

P100S10

PROFILO A C IN ZINCATO A CALDO 50X40X2 ASOLATO SOTTO
Barre da mt 3,00 e 6,00

C PROFILE HDG 50X40X2 WITH HOLES Lenght 3,00 mt or 6,00 mt.



P200A00

PROFILO A "C" IN ALLUMINIO 41X25mm (0,92kg/mt)
Barre da 3,20 mt.

"C" ALUMINIUM PROFILE 41X25mm (0,92kg/mt)
Bars of 3,20 mt. Lenght



P100S03

PROFILO A C IN ZINCO MAGNESIO 35X41 cm
Barre da mt 2,10 O mt 3,20 (1,45kg/mt)

35X41cm ZINC MAGNESIUM PROFILE Lenght 2,10 mt or 3,20 (1,45kg/mt)



P202A02

PROFILO STRUTTURALE IN ALLUMINIO 40X38,5mm (0,92kg/mt)
Barre da 2,10 mt. o 3,20 mt.

ALUMINIUM PROFILE 40X38,5mm (0,92kg/mt)
Bars from 2,10 mt., 3,20 mt or 6,20 mt. Lenght



P401A00

PROFILO PER GRECCATO 82,5X25 PESO: kg/mt 730
Barre da mt 3,20 - 4,40 e spezzoni da 30 cm

ALUMINIUM PROFILE FOR CORRUGATED SHEET ROOFS 82,5X25 WEIGHT: kg/mt 730
Bars from 2,10 mt. or 3,20 mt. Lenght - 4,40 mt. Lenght and 30 cm Lenght.



P500A020

PROFILO A "L" IN ALLUMINIO 40X20X3 PESO: kg/mt 0,410
Barre da mt 3,20

ALUMINIUM "L" PROFILE 40X20X3 WEIGHT: kg/mt 0,410
Bars of 3,20 mt. Lenght



P500A040

PROFILO A "L" IN ALLUMINIO 40X40X3 PESO: kg/mt 0,624
Barre da mt 3,20

ALUMINIUM "L" PROFILE 40X40X3 WEIGHT: kg/mt 0,624
Bars of 3,20 mt. Lenght

**GRUPPO
GROUP**

**PROFILI
RODS AND
PROFILES**

L100D01**KL207D01****KL207D02****L208D00****L500D07****L500D08**

INFORMAZIONI TECNICHE TECHNICAL INFORMATION

L100D01	KL207D01	KL207D02
<p>GIUNZIONE ESTERNA PROFILO PER P202A02 IN ACCIAIO INOX + 2 TE M8x20 inox + 2 dadi</p> <p><i>EXTERNAL JOINT/JUNCTION FOR PROFILE P202A02 STAINLESS STEEL - STAINLESS STEEL BOLTS INCLUDED</i></p>	<p>KIT COMPOSTO DA 1 PIASTRINA FISSAGGIO LATERALE BINARIO P202A02 IN ACCIAIO INOX, 2 DADI H108D00, 2 VITI TCEI M8X20</p> <p><i>KIT CONSISTING OF 1 LATERAL RAIL CONNECTOR FOR P202A02 PROFILE IN STAINLESS STEEL, 2 STAINLESS STEEL NUTS, 2 TCEI M8X20 BOLTS</i></p>	<p>KIT COMPOSTO DA 1 PIASTRINA FISSAGGIO LATERALE BINARIO P202A02 IN ACCIAIO INOX CON PERNO, 2 DADI H108D00, 2 VITI TCEI M8X20</p> <p><i>KIT CONSISTING OF 1 LATERAL RAIL CONNECTOR FOR P202A02 PROFILE IN STAINLESS STEEL WITH PIN, 2 STAINLESS STEEL NUTS, 2 TCEI M8X20 BOLTS</i></p>
L208D00	L500D07	L500D08
<p>PIASTRINA PER VITE DOPPIO FILETTO ASOLA 9mm – FORO M12</p> <p><i>9mm DUAL THREAD SCREW PLATE – STAINLESS STEEL M 12 HOLE</i></p>	<p>GIUNZIONE IN ACCIAIO INOX PER PROFILO P100S02 e P100S03 INCLUSO VITERIA IN INOX</p> <p><i>STAINLESS STEEL JUNCTION FOR P100S02 AND P100S03 PROFILE, STAINLESS STEEL BOLTS INCLUDED</i></p>	<p>GIUNZIONE IN ACCIAIO INOX PER PROFILO P100S05 INCLUSO VITERIA IN INOX</p> <p><i>STAINLESS STEEL JUNCTION FOR P100S05 PROFILE, STAINLESS STEEL BOLTS INCLUDED</i></p>

GRUPPO
GROUP

GIUNZIONI
CHANNEL COUPLERS

K500D01**K500D02****K500D31****K500D32****K500A01****K500A02****K500D21****K500D22****K500D31M****K500D32M****M201A01****M202A30-35-40****INFORMAZIONI TECNICHE**
TECHNICAL INFORMATION**INFORMAZIONI TECNICHE**
TECHNICAL INFORMATION**INFORMAZIONI TECNICHE**
TECHNICAL INFORMATION**K500D01 K500D02 K500D21 K500D22**

KIT MORSETTO CENTRALE ACCIAIO INOX CON PIASTRINA ZINCATO CALDO CON MOLLA E VITE TCEI M8 STAINLESS STEEL INTERMEDIATE JAW WITH BOLT AND HAMMER NUT M8	KIT MORSETTO TERMINALE ACCIAIO INOX + PIASTRINA ZINCATO CALDO CON MOLLA E VITE TCEI M8 MISURE DA 30 A 50mm SPESSORE MODULO STAINLESS STEEL "Z" JAW WITH BOLT AND HAMMER NUT M8 FOR FRAMES FROM 30 TO 50mm	KIT MORSETTO CENTRALE ACCIAIO INOX CON PIASTRINA A SCATTO PER PROFILO F100D69 - ZINCATO F100D69 E BRUGOLA M8 INOX STAINLESS STEEL INTERMEDIATE JAW WITH BOLT AND GALVANIZED HAMMER NUT M8	KIT MORSETTO TERMINALE ACCIAIO INOX CON PIASTRINA A SCATTO PER PROFILO F100D53 - ZINCATO F100D53 E BRUGOLA M8 INOX STAINLESS STEEL "Z" JAW WITH BOLT AND GALVANIZED HAMMER NUT M8
--	---	---	---

K500D31 K500D32 K500D31M K500D32M

KIT MORSETTO CENTRALE ACCIAIO INOX CON PIASTRINA IN ZINCATO CON PLASTICA E BRUGOLA M8 INOX STAINLESS STEEL INTERMEDIATE JAW WITH BOLT AND GALVANIZED HAMMER NUT M8 WITH PLASTIC	KIT MORSETTO TERMINALE ACCIAIO INOX CON PIASTRINA IN ZINCATO CON PLASTICA E BRUGOLA M8 INOX STAINLESS STEEL "Z" JAW WITH BOLT AND GALVANIZED HAMMER NUT M8 WITH PLASTIC	KIT MORSETTO CENTRALE ACCIAIO INOX CON PIASTRINA IN ZINCATO CON PLASTICA E BRUGOLA M8 INOX - MONTATO - STAINLESS STEEL INTERMEDIATE JAW WITH BOLT AND GALVANIZED HAMMER NUT M8 WITH PLASTIC - ASSEMBLED -	KIT MORSETTO TERMINALE ACCIAIO INOX CON PIASTRINA IN ZINCATO E PLASTICA E BRUGOLA M8 INOX - MONTATO - STAINLESS STEEL "Z" JAW WITH BOLT AND GALVANIZED HAMMER NUT M8 WITH PLASTIC - ASSEMBLED -
---	---	---	---

K500A01 K500A02 M201A01 M202A30-35-40

KIT MORSETTO CENTRALE IN ALLUMINIO CON PIASTRINA ALLUMINIO F100A00 E BRUGOLA M8 INOX ALUMINIUM INTERMEDIATE JAW WITH BOLT AND ALUMINIUM HAMMER NUT M8	KIT MORSETTO TERMINALE IN ALLUMINIO CON PIASTRINA ALLUMINIO F100A00 E BRUGOLA M8 INOX ALUMINIUM "Z" JAW WITH BOLT AND ALUMINIUM HAMMER NUT M8	PRESSORE CENTRALE IN ALLUMINIO L 80mm 80 mm ALUMINIUM INTERMEDIATE JAW M9	PRESSORE TERMINALE IN ALLUMINIO MISURE DA 31 A 50mm "Z" TYPE JAW ALUMINIUM 2mm MEASURE FROM 31 TO 50mm
---	---	---	--

K500A01N**K500A02N****K500A11****K500A12****M201A01N****M202AN32-50****K500A11M****K500A12M****M201D01****M202D30 32-35-40-45****INFORMAZIONI TECNICHE**
TECHNICAL INFORMATION**INFORMAZIONI TECNICHE**
TECHNICAL INFORMATION**INFORMAZIONI TECNICHE**
TECHNICAL INFORMATION**K500A01N K500A02N M201A01N M202A32N 35-40-46-50**

KIT MORSETTO CENTRALE IN ALLUMINIO ANODIZZATO NERO CON PIASTRINA ALLUMINIO F100A00 E BRUGOLA M8 INOX BLACK ANODIZED ALUMINIUM INTERMEDIATE JAW WITH BOLT AND ALUMINIUM HAMMER NUT M8	KIT MORSETTO TERMINALE IN ALLUMINIO ANODIZZATO NERO CON PIASTRINA ALLUMINIO F100A00 E BRUGOLA M8 INOX BLACK ANODIZED ALUMINIUM "Z" JAW WITH BOLT AND ALUMINIUM HAMMER NUT M8	PRESSORE CENTRALE IN ALLUMINIO ANODIZZATO NERO L 80mm 80 mm BLACK ANODIZED ALUMINIUM INTERMEDIATE JAW M9	PRESSORE TERMINALE IN ALLUMINIO ANODIZZATO NERO MISURE DA 31 A 50mm "Z" TYPE BLACK ANODIZED ALUMINIUM JAW 2mm MEASURE FROM 31 TO 50mm
--	--	--	---

K500A11 K500A12 K500A11M K500A12M

KIT MORSETTO CENTRALE IN ALLUMINIO + PIASTRINA IN ZINCATO CON PLASTICA E VITE TCEI M8 STAINLESS STEEL INTERMEDIATE JAW WITH BOLT AND GALVANIZED HAMMER NUT M8 WITH PLASTIC	KIT MORSETTO TERMINALE IN ALLUMINIO + PIASTRINA IN ZINCATO CON PLASTICA E VITE TCEI M8 MISURE DA 30 A 50mm SPESSORE MODULO STAINLESS STEEL "Z" JAW WITH BOLT AND GALVANIZED HAMMER NUT M8 WITH PLASTIC FOR FRAMES FROM 30 TO 50mm	KIT MORSETTO CENTRALE IN ALLUMINIO + PIASTRINA IN ZINCATO CON PLASTICA E VITE TCEI M8 - ASSEMBLATO - STAINLESS STEEL INTERMEDIATE JAW WITH BOLT AND GALVANIZED HAMMER NUT M8 WITH PLASTIC - ASSEMBLED -	KIT MORSETTO TERMINALE IN ALLUMINIO + PIASTRINA IN ZINCATO CON PLASTICA E VITE TCEI M8 - ASSEMBLATO - STAINLESS STEEL "Z" JAW WITH BOLT AND GALVANIZED HAMMER NUT M8 WITH PLASTIC FOR FRAMES FROM 30 TO 50mm - ASSEMBLED -
--	---	---	--

M201D01 M202D30-32-35-40-45

PRESSORE CENTRALE IN ACCIAIO INOX L 80mm 80 mm STAINLESS STEEL INTERMEDIATE JAW M9	PRESSORE TERMINALE IN ACCIAIO INOX MISURE DA 31 A 50mm "Z" TYPE JAW STAINLESS STEEL 2mm MEASURE FROM 31 TO 50mm
--	---

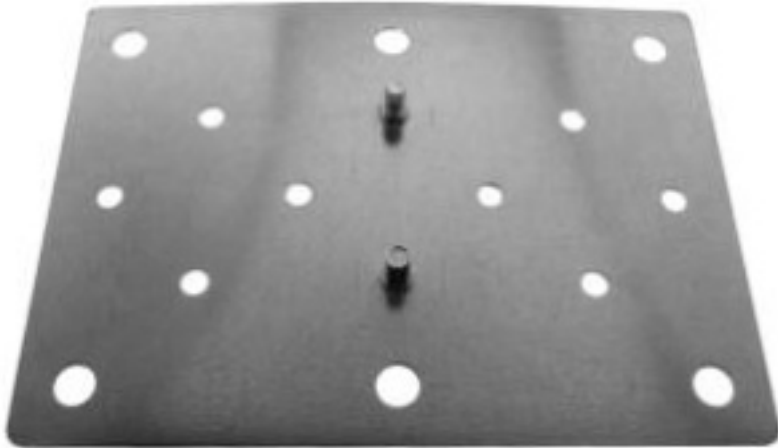
GRUPPO
GROUP**MORSETTI E**
PRESSORI
JAWS AND CLAMPS



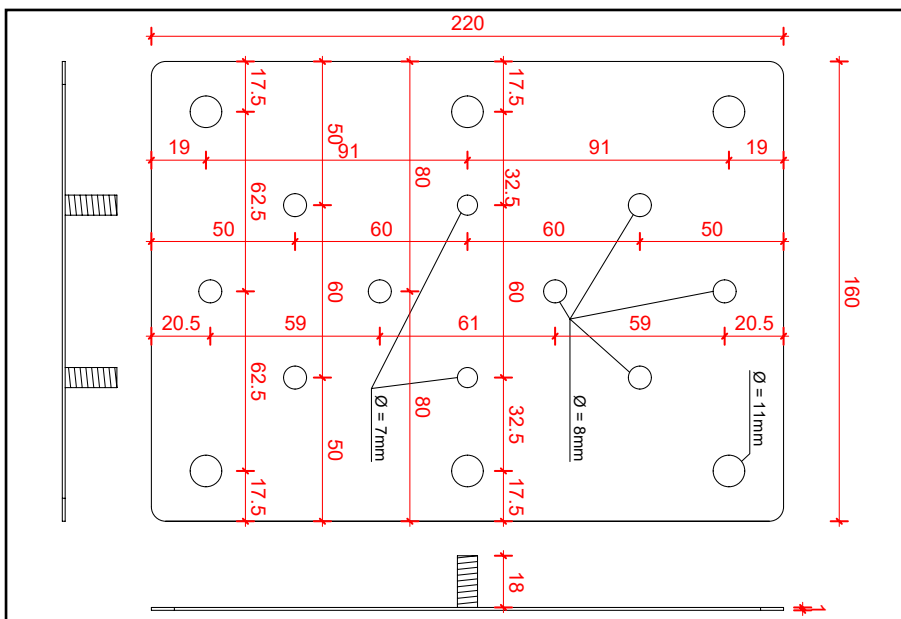
D102Z25

PIASTRA ZINCATO CON DUE PERNI PER L'INCOLLAGGIO SU SUPPORTI

GALVANISED PLATES WITH 2 ANCHOR BOLTS AND HOLES FOR SEALING



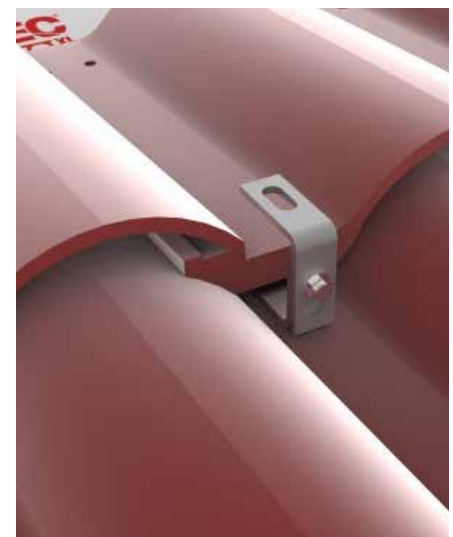
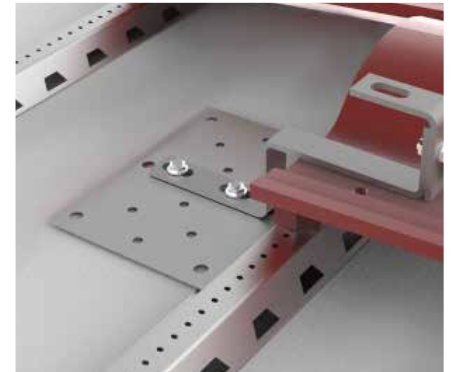
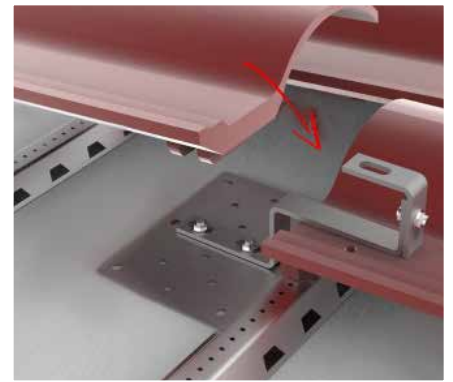
DIMENSIONI DIMENSIONS



INFORMAZIONI TECNICHE TECHNICAL INFORMATION

Zincato 1,5mm
Galvanized Plate 1,5mm

Dimensioni Piastra 220mm x 160mm
Da abbinare con staffe per applicazioni
su tetti a coppo e tegola
Dimensions Plate 220mm x 160mm
Used with brackets for applications on bent-tile roofs



GRUPPO GROUP

**PIASTRE
PLATES**

B208D20



INFORMAZIONI TECNICHE TECHNICAL INFORMATION

B208D20	20mm	B208D45	45mm
B208D25	25mm	B208D50	50mm
B208D30	30mm	B208D55	55mm
B208D35	35mm	B208D60	60mm
B208D40	40mm	B208D65	65mm

VITI BRUGOLA M8 INOX TCEI 5931 A2 da 20mm a 60mm

HEXAGON SOCKET HEAD CAP SCREWS M8 from 20mm to 60mm 5931 A2 DIN912

B308D20



INFORMAZIONI TECNICHE TECHNICAL INFORMATION

B308D20	20mm	B308D45	45mm
B308D25	25mm	B308D50	50mm
B308D30	30mm	B308D55	55mm
B308D35	35mm	B308D60	60mm
B308D40	40mm	B308D65	65mm

VITE TE TESTA ESAGONALE UNI 5739 M8 INOX A2 AISI 304 VARIE da 12mm a 65mm

HEXAGON HEAD BOLTS UNI 5739 M8 INOX A2 AISI 304 from 12mm to 65mm

B510D30



INFORMAZIONI TECNICHE TECHNICAL INFORMATION

B510D30

VITE TE TESTA A MARTELLO M8X30 INOX A2

HAMMER HEAD BOLTS M8X30 INOX A2

B408D25



VITE TESTA TONDA 5732 INOX A2 AISI 304 M8X25

TT05-BOLT ROUND HEAD UNI 5732 STAINLESS STEEL A2 AISI 304 M8X25

F100Z01



INFORMAZIONI TECNICHE TECHNICAL INFORMATION

F100Z01

PIASTRINA M8 CON MOLLA CORTA PER PROFILO 40X40 ZINCATO A CALDO 34X19X6

HAMMER NUT HDG M8 WITH SPRING 34X19X6

F100Z20



PIASTRINA M8 PER TUTTI I PROFILI CON GUARNIZIONE IN PLASTICA 34X19X6

HAMMER NUT GALVANIZED M8 34X19X6 WITH PLASTIC GASKET

F100A00



PIASTRINA BLOCCAGGIO IN ALLUMINIO 32X20X8mm

HAMMER NUT ALUMINIUM 32X20X8mm

F100D69



PIASTRINA BLOCCAGGIO A SCATTO PER PROFILO P100S03

SPECIAL SNAP NUT FOR P100S03 PROFILE

F100Z00



PIASTRINA BLOCCAGGIO ACCIAIO ZINCATO A CALDO 34X19X6 M8

HAMMER NUT HDG 34X19X6 M8

H108D00



INFORMAZIONI TECNICHE TECHNICAL INFORMATION

H108D00

H110D00

H208D00

H208D06

DADO FLANGIATO INOX DIN 6923 A2 M8 AISI 304

HEXAGON FLANGE NUTS DIN6923 A2 M8 AISI 304

DADO FLANGIATO INOX DIN 6923 A2 M10 AISI 304

HEXAGON FLANGE NUTS DIN6923 A2 M10 AISI 304

DADO QUADRO INOX DIN 6923 A2 M8 AISI 304

SQUARE CAP NUT DIN 557 A2 M8 AISI 304

DADO ESAGONALE INOX DIN 6923 A2 M8 AISI 304

HEXAGON CAP NUTS DIN 917 A2 M8

K408D20



K408D25



K410D30



INFORMAZIONI TECNICHE TECHNICAL INFORMATION

K408D20

K408D25

K410D30

VITE DOPPIO FILETTO ACCIAIO INOX M10X200 CON GUARNIZIONE IN EPDM, 3 DADI FLANGIATI E PIASTRINA ACCIAIO INOX 82X40X5 mm L208D00

DUAL THREAD SCREW FOR METAL OR CONCRETE M10X200 STAINLESS STEEL WITH 3 FLANGE NUTS + STAINLESS STEEL PLATE 82X40X5 mm L208D00

VITE DOPPIO FILETTO ACCIAIO INOX M10X250 CON GUARNIZIONE IN EPDM, 3 DADI FLANGIATI E PIASTRINA ACCIAIO INOX 82X40X5 mm L208D00

DUAL THREAD SCREW FOR METAL OR CONCRETE M10X250 STAINLESS STEEL WITH 3 FLANGE NUTS + STAINLESS STEEL PLATE 82X40X5 mm L208D00

VITE DOPPIO FILETTO ACCIAIO INOX M10X300 CON GUARNIZIONE IN EPDM, 3 DADI FLANGIATI E PIASTRINA ACCIAIO INOX 82X40X5 mm L208D00

DUAL THREAD SCREW FOR METAL OR CONCRETE M10X300 STAINLESS STEEL WITH 3 FLANGE NUTS + STAINLESS STEEL PLATE 82X40X5 mm L208D00

B608D20-25 B610D30



B020A17OR B020A19OR



B020A11



INFORMAZIONI TECNICHE TECHNICAL INFORMATION

B608D20-25
B610D30

B020A17OR
B020A19OR

B020A11

VITE DOPPIO FILETTO ACCIAIO INOX M10X200/250/300 CON GUARNIZIONE IN EPDM, 3 DADI FLANGIATI

DUAL THREAD SCREW FOR METAL OR CONCRETE M10X200/250/300 STAINLESS STEEL WITH 3 FLANGE NUTS

RIVETTO Alu/Alu TT + G. ss1,5-6,4 MISURE 5,2x17,1 OPPURE 5,2x19,1 CON GUARNIZIONE EPDM OR

Alu/Alu TT + G. ss1,5-6,4 RIVET - MEASURES 5,2x17,1 OR 5,2x19,1 WITH "EPDM OR" GASKET

RIVETTO A TENUTA STAGNA AL/AC 4,8 X 11

AL/AC 4,8 X 11 WATERTIGHT RIVET

**GRUPPO
GROUP**

**BULLONERIA
BOLTS**

K900D22



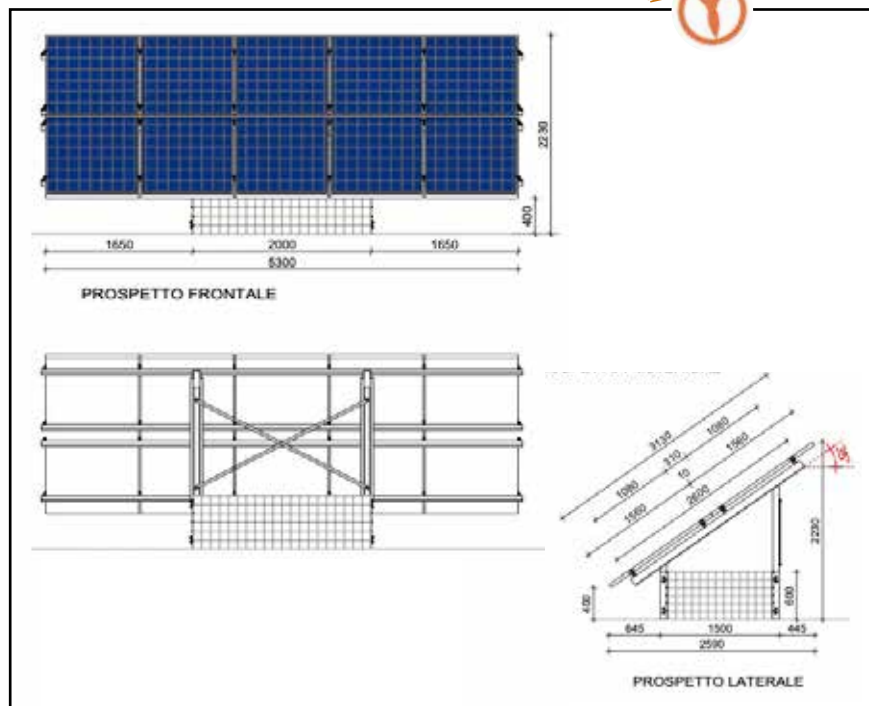
**SISTEMA A TERRA CON
GABBIE (NO BATTIPALO)**

*GROUND MOUNTING STRUCTURES
WITH GABIONS (NO PILEDRIVER)*



**DIMENSIONI
DIMENSIONS**

BREVETTO



**INFORMAZIONI TECNICHE
TECHNICAL INFORMATION**

**STRUTTURA 10 MODULI 2 FILE X 5 VERTICALI CON GABBIA
INCLINAZIONE 10° ÷ 30° REMOVIBILE - ZINCATO CALDO E INOX**

*10 MODULES STRUCTURE 2X5 VERTICAL
WITH GABIONS - 10° ÷ 30° TILT*

**SU RICHIESTA:
2-3-4 FILE ORIZZONTALI**

**ON REQUEST:
2-3-4 HORIZONTAL ROWS**

**GRUPPO
GROUP**

**IMPIANTI A TERRA
GROUND
STRUCTURES**

APPLICAZIONI PRINCIPALI COLLANTE C100T01

C100T01 SEALANT APPLICATION

MS SEALANT è un adesivo sigillante monocomponente a rapida polimerizzazione altamente e permanentemente elastico ed elevata coesione. MS SEALANT viene utilizzato per realizzare sigillature e giunzioni adesive elastiche di elevate prestazioni.

MS SEALANT is a one-component, fast-curing highly and permanently elastic sealant adhesive with high cohesion. MS SEALANT is used to make high performance elastic adhesive seals and joints.

MS SEALANT 55 - CARATTERISTICHE CHIMICO-FISICHE

ASPETTO: Pastoso

BASE: Polimero MS

COLORI: Grigio - Trasparente

TEMPERATURA DI APPLICAZIONE: da +5° a +30°C

ALLUNGAMENTO ALLA ROTTURA: 300% (DIN 53505 - iso 8339)

ALLUNGAMENTO ALLA ROTTURA: 300% (DIN 53505 - iso 8339)

DUREZZA SHORE A 55-60 (ISO 868)

FUORI PELLE: 10 min.

RESISTENZA TRAZIONE: 2,3 N/mm² (DIN 53305)

PESO SPECIFICO: 1480 ± 10 Kg/m³

RESISTENZA TEMPERATURA: da -40 a +110°C

MS SEALANT 55 - CHEMICAL-PHYSICAL CHARACTERISTICS

APPEARANCE: Pasty o Mellow

BASE: MS Polymer

COLORS. Grey - Transparent

APPLICATION TEMPERATURE: FROM + 5 TO +30°C

STRETCHING TO BREAKAGE: 300% (DIN 53505 - iso 8339)

SHORE HARDNESS AT 55-60 (ISO 868)

SHORE HARDNESS AT 55-60 (ISO 868)

OUT OF SKIN: 10 min

TRACTION RESISTENCE: 2,3 N/mm²

SPECIFIC WEIGHT: 1480 ± Kg/m³

TEMPERATURE RESISTANCE: from -40 to +110°C

C100T01



NA40X2 - NA40X3



INFORMAZIONI TECNICHE

TECHNICAL INFORMATION

NA40X2	NA40X3	NA40X3-20
MOUSSE EPDM 40X3 ADESIVATA SU UN LATO - 20 m	MOUSSE EPDM 40X2 ADESIVATA SU UN LATO	MOUSSE EPDM 40X2 ADESIVATA SU UN LATO (1 ROTOLO DA 20 metri)
40x3 EPDM SEAL - GLUED ON ONE SITE	40X2 EPDM SEAL - GLUED ON ONE SITE	40X2 EPDM SEAL - GLUED ON ONE SITE (20 mt. coil)



SUN-AGE srl

PV Mounting Systems

Via Gropelle 13 - 36064 COLCERESA (VI)
Tel. +39 0424478028
info@sun-age.it - www.sun-age.it

