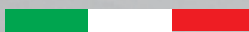


KOI



GEOMETRY OF LIGHT

LOMBARDO



made in Italy

KOI

Un finto incasso caratterizzato da linee geometriche essenziali. Koi è un segnapasso contraddistinto da un fascio luminoso asimmetrico. Corpo in alluminio pressofuso disponibile nei formati tondo, quadrato, rettangolare ed in diverse finiture cromatiche.

Un prodotto scenografico in grado di conferire carattere e personalità ad ogni contesto. Illuminando perfettamente il passaggio, crea dinamicità grazie al fascio luminoso direzionato verso il basso con totale assenza di abbagliamento. Alimentazione integrata, piastra LED di ultima generazione e semplicità di installazione, sono dettagli che garantiscono a Koi una completezza tecnica e funzionale.

A mock recessed fitting featuring clean geometric lines. Koi is a steplight characterized by an asymmetric beam of light. The round, square or rectangular die-cast aluminium body is available in different chromatic finishes.

A spectacular product that confers character and personality to every setting. Providing the perfect lighting for paths, it creates dynamism thanks to the beam of light that is directed downwards resulting in a total absence of glare. The integrated power supply, the latest generation of LED plate and the ease of installation are details that ensure KOI is complete both technically and functionally.

Un faux encastrement caractérisé par des lignes géométriques essentielles. Koi est une applique caractérisée par un faisceau lumineux asymétrique. Corps en aluminium moulé sous pression disponible dans les formats rond, carré, rectangulaire et dans différentes finitions chromatiques. Un produit décoratif en mesure de conférer caractère et personnalité à chaque contexte. En éclairant parfaitement le passage, il crée du dynamisme grâce au faisceau lumineux dirigé vers le bas avec une absence totale d'éblouissement. Alimentation intégrée, plaque LED de dernière génération et simplicité d'installation, sont des détails qui garantissent à Koi une exhaustivité technique et fonctionnelle.

Un finto incasso asimmetrico ideale per vialetti, camminamenti e scale.

An asymmetric mock recessed fitting ideal for paths and stairs.

Un faux encastrement asymétrique idéal pour allées et escaliers.



Koi 110



Koi 120



Koi 220



Koi 110 Post H400

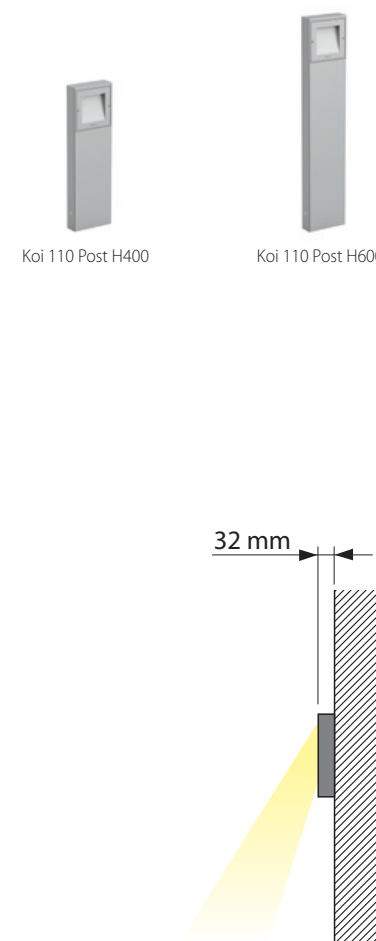


Koi 110 Post H600

- Alimentazione diretta 220-240V
- Finto incasso asimmetrico
- Diffusore in vetro temprato e satinato
- Corpo in alluminio pressofuso
- Predisposto per l'installazione su scatole standard 502 e 503
- Sistema di chiusura tramite viti imperdibili a cava esagonale
- Predisposto per doppio ingresso alimentazione

- *Integral ballast 220-240V*
- *An asymmetric mock recessed fitting*
- *Tempered glass diffuser with frosted effect*
- *Body made of die-cast aluminium*
- *Suitable for recess installation in standard 502 and 503*
- *Closing system by means of retractable captive hex screws*
- *Double cable entry at the back*

- *Alimentation intégrée 220-240V*
- *Un faux encastrement asymétrique*
- *Diffuseur en verre trempé effet satiné*
- *Corps en aluminium injecté*
- *Convient à une installation à encastrer avec boîtes standards 502 et 503*
- *Fermeture vis sans tête à six pans creux*
- *Possibilité alimentation double entrée*



Koi

design: Giancarlo Alci

Adatto anche ad uso esterno.

Driver 220-240V integrato e Led di ultima generazione.

Corpo e tappo in alluminio primario pressofuso EN-AB46100; elevata resistenza all'ossidazione grazie al trattamento di passivazione a base di zirconio e alla verniciatura con resine poliestere stabilizzata ai raggi UV.

Diffusore in vetro temprato effetto satinato.

Guarnizione in silicone.

Bulloneria in acciaio A4 o AISI 316L.

LED 4000K (N), 3000K (3) o 2700K (2).

Alimentazione diretta 220-240V.

Nessun rischio fotobiologico, RG0 gruppo di rischio esente (EN62471).

Suitable for indoor and outdoor use.

Integrated driver 220-240V and the latest generation of Led.

Body and cover made of EN-AB46100 die-cast aluminium primary alloy; highly resistant to oxidization thanks to the zirconium-based passivation treatment and UV stabilized polyester resin coating.

Tempered glass diffuser with frosted effect.

Silicone gaskets.

A4 or AISI 316L stainless steel nuts and bolt.

LED 4000K (N), 3000K (3) o 2700K (2). LED.

Integrated driver 220-240V. No risk of photobiological damage, RG0 group (EN62471).

Egalement adapté à l'usage à l'extérieur.

Alimentation intégrée 220 - 240V et Led de dernière génération.

Corps et couverture en aluminium primaire injecté EN-AB46100; haute résistance à l'oxydation grâce au traitement de passivation à base de zirconium et laquage poudre à base de résines polyester, fixées au rayon UV.

Diffuseur en verre trempé effet satiné.

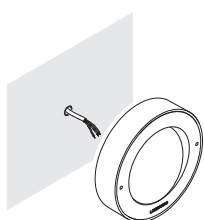
Jointes en silicone.

Visserie en acier inox type A4 ou AISI 316L.

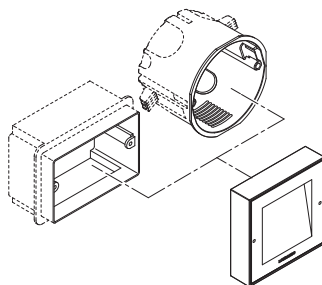
LED 4000K (N), 3000K (3) ou 2700K (2) (blanche chaud). Alimentation intégrée 220-240. Pas de risque photobiologique, RG0 groupe (EN62471).

Montaggio facile e veloce

Easy and quick installation - Installation facile et rapide



Direttamente a parete
Surface mounting
En saillie



Con scatole standard
Surface mounting on recess box
En saillie sur boîte d'encastrement

INSTALLAZIONE
RAPIDA

QUICK
INSTALLATION
INSTALLATION
RAPIDE

Colori disponibili

Available colours - Couleurs disponibles



Bianco
White
Blanc



Grigio High Tech
Grey High Tech
Gris High Tech



Grigio antracite
Grey anthracite
Gris anthracite



Corten



Koi

Koi 110 (NEW)

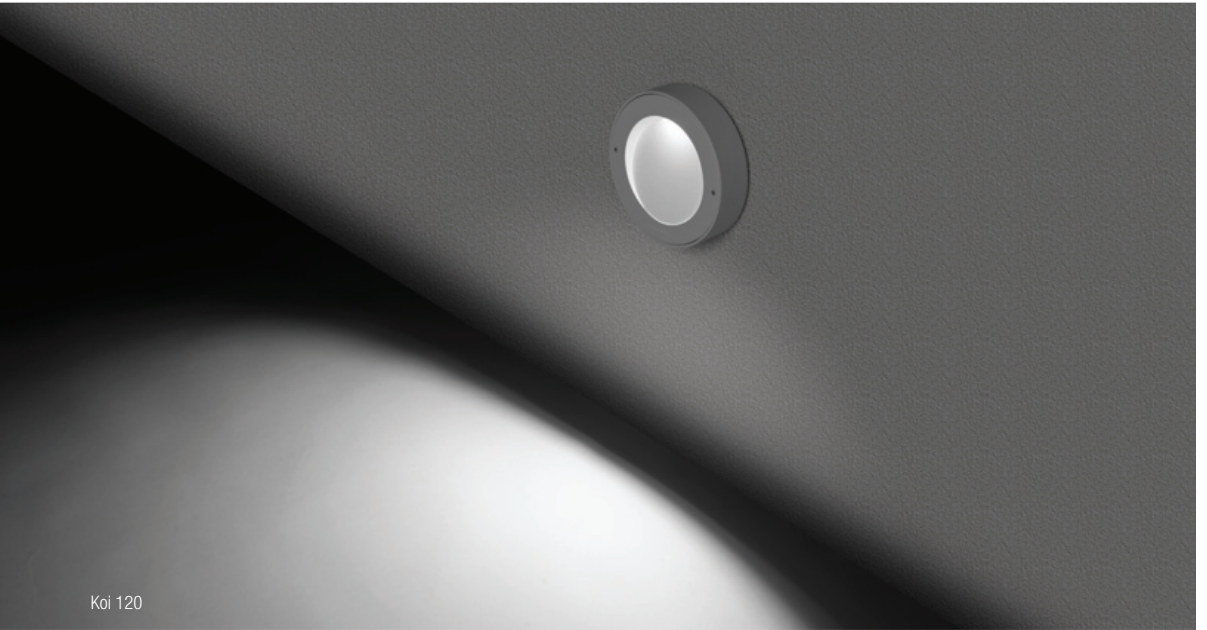
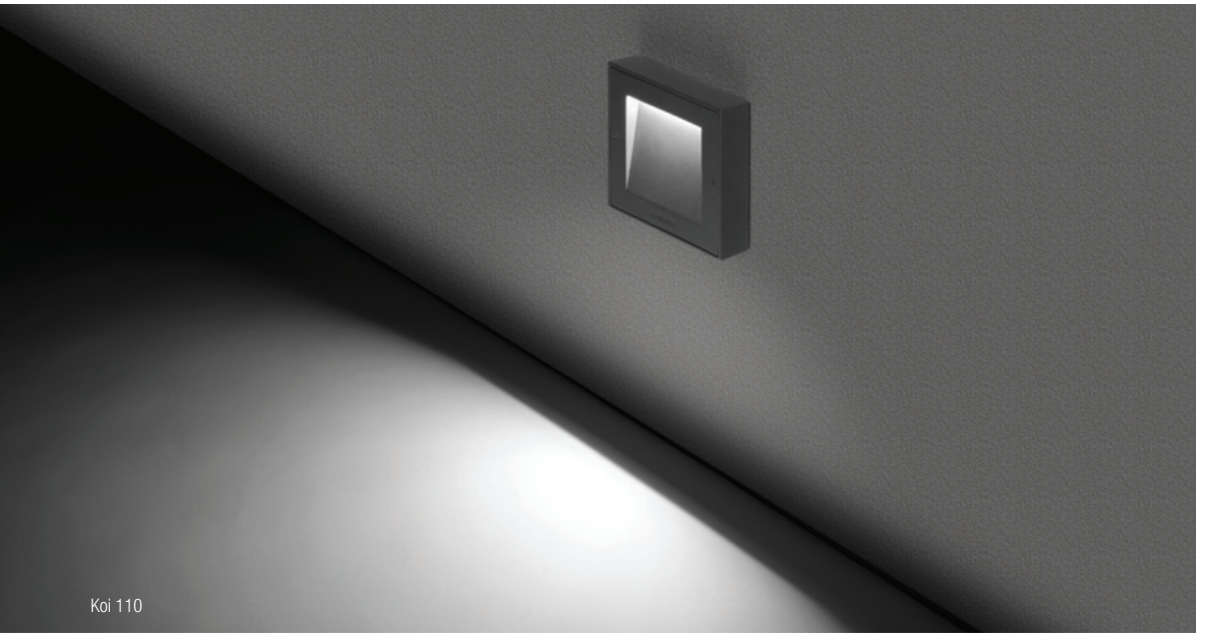
	Specif.	Col.	Trasp.
<p>IP 66 IK 10 20J xx9 CE</p>	<p>LED 750 lm 6W real output lm 375</p> <p>A+ A+ A++</p>	<p>CL.I E</p> <p>□ ■ ▲</p>	<p>LL121000 □ LL121001 □ LL121002 □ LL121003 □</p> <p>led colour N = (4000K) 3 = (3000K, lm -5%) 2 = (2700K, lm -5%)</p>

Koi 120 (NEW)

	Specif.	Col.	Trasp.
<p>IP 66 IK 10 20J xx9 CE</p>	<p>LED 750 lm 6W real output lm 375</p> <p>A+ A+ A++</p>	<p>CL.I E</p> <p>□ ■ ▲</p>	<p>LL121004 □ LL121005 □ LL121006 □ LL121007 □</p> <p>led colour N = (4000K) 3 = (3000K, lm -5%) 2 = (2700K, lm -5%)</p>

Koi 220 (NEW)

	Specif.	Col.	Trasp.
<p>IP 66 IK 10 20J xx9 CE</p>	<p>LED 1300 lm 9W real output lm 650</p> <p>A+ A+ A++</p>	<p>CL.I E</p> <p>□ ■ ▲</p>	<p>LL121008 □ LL121009 □ LL121010 □ LL121011 □</p> <p>led colour N = (4000K) 3 = (3000K, lm -5%) 2 = (2700K, lm -5%)</p>





Koi 110



Koi 220

Koi 110 Post

design: Giancarlo Alci



Colori disponibili

Available colours - Couleurs disponibles

- Bianco
White - Blanc
- Grigio High Tech
Grey High Tech - Gris High Tech
- Grigio antracite
Grey anthracite - Gris anthracite
- Corten

Materiale diffusore

Diffuser material - Type de diffuseur

- Vetro satinato
Frosted glass - Verre effet satiné

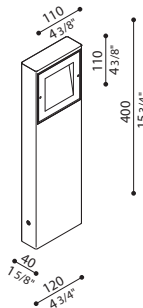
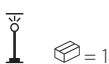
Adatto anche ad uso esterno.
Driver 220-240V integrato e Led di ultima generazione.
Corpo e tappo in alluminio pressofuso; elevata resistenza all'ossidazione grazie al trattamento di passivazione a base di zirconio e alla verniciatura con resine poliestere stabilizzata ai raggi UV.
Diffusore in vetro temprato effetto satinato.
Guarnizione in silicone. Sistema di chiusura tramite viti imperdibili a scomparsa, con cava esagonale. Bulloneria in acciaio A4 o AISI 316L.
Palo da giardino. Corpo realizzato in metallo zincato a freddo, verniciato con resine poliestere stabilizzate ai raggi UV. Bulloneria in acciaio inox A4. Idoneo per installazione a terra.
LED 4000K (N), 3000K (3) o 2700K (2). Alimentazione diretta 220-240V.
Nessun rischio fotobiologico, RG0 gruppo di rischio esente (EN62471).

Suitable for indoor and outdoor use.
Integrated driver 220-240V and the latest generation of Led.
Body and cover made of die-cast aluminium primary alloy; highly resistant to oxidation thanks to the zirconium-based passivation treatment and UV stabilised polyester resin coating.
Tempered glass diffuser with frosted effect.
Silicone gaskets.
A4 or AISI 316L stainless steel nuts and bolt.
Closing system by means of retractable captive hex screws. Double cable entry at the back.
Post for garden use. Made of cold galvanized metal, coated with UV-stabilised polyester resins. A4 stainless steel nuts and bolts. Suitable for outdoor use and ground application.
LED 4000K (N), 3000K (3) o 2700K (2). LED. Integral ballast 220-240V. No risk of photobiological damage, RG0 group (EN62471).

Egalement adapté à l'usage à l'extérieur.
Alimentation intégrée 220 - 240V et Led de dernière génération.
Corps et couverture en aluminium primaire injecté; haute résistance à l'oxydation grâce au traitement de passivation à base de zirconium et laquage poudre à base de résines polyester stabilisées aux rayons UV.
Diffuseur en verre trempé effet satiné.
Joint en silicone.
Visserie en acier inox type A4 ou AISI 316L.
Fermeture vis sans tête à six pans creux. Possibilité alimentation double entrée.
Poteau de jardin. Corps réalisé en métal zincé à froid, peinture avec résines polyester stabilisées aux rayons UV. Boulonnerie en acier inox A4. Convient pour une utilisation au sol.
LED 4000K (N), 3000K (3) ou 2700K (2) (blanche chaude). Alimentation intégrée 220-240. Pas de risque photobiologique, RG0 groupe (EN62471).



Koi 110 Post H400



LED	Specif.	Col.	Trasp.
LED 750 lm 6W real output lm 375	CL.I €	<input type="checkbox"/> <input type="checkbox"/> <input type="checkbox"/> <input type="checkbox"/>	LL121012□ LL121017□ LL121018□ LL121019□

A+ A+ A+

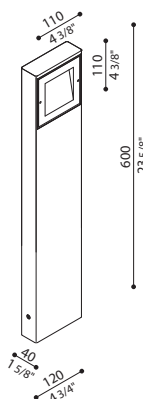
led colour

- N = (4000K)
- 3 = (3000K, lm -5%)
- 2 = (2700K, lm -5%)

NEW



Koi 110 Post H600



LED	Specif.	Col.	Trasp.
LED 750 lm 6W real output lm 375	CL.I €	<input type="checkbox"/> <input type="checkbox"/> <input type="checkbox"/> <input type="checkbox"/>	LL121012□ LL121013□ LL121014□ LL121015□

A+ A+ A+

led colour

- N = (4000K)
- 3 = (3000K, lm -5%)
- 2 = (2700K, lm -5%)

NEW



gf studio

Koi 220 Grigio High Tech
Koi 220 Grey High Tech
Koi 220 Gris High Tech

KOI

LOMBARDO




made in Italy

Lombardo S.r.l.

Via Pizzigoni, 3 - 24060 Villongo (Bergamo) Italia

Tel. +39 035 939411 Fax +39 035 939496

www.lombardo.it info@lombardo.it



Copyright © 2018 - La riproduzione anche parziale è severamente vietata senza autorizzazione scritta da parte della Lombardo S.r.l.
Total or even partial reproduction of this catalogue is forbidden without prior written authorization from Lombardo S.r.l.